

**KING GEORGE COUNTY VIRGINIA
2005 GEODETIC CONTROL SURVEY (REVISED 11-08)**

JN 105-001

HORIZONTAL DATUM: NAD 83(2007)
 VERTICAL DATUM: NAVD 88
 COORDINATE SYSTEM: VIRGINIA STATE PLANE, NORTH ZONE
 UNITS: U.S. SURVEY FOOT

HORIZONTAL ORDER: FIRST
 VERTICAL ORDER: THIRD

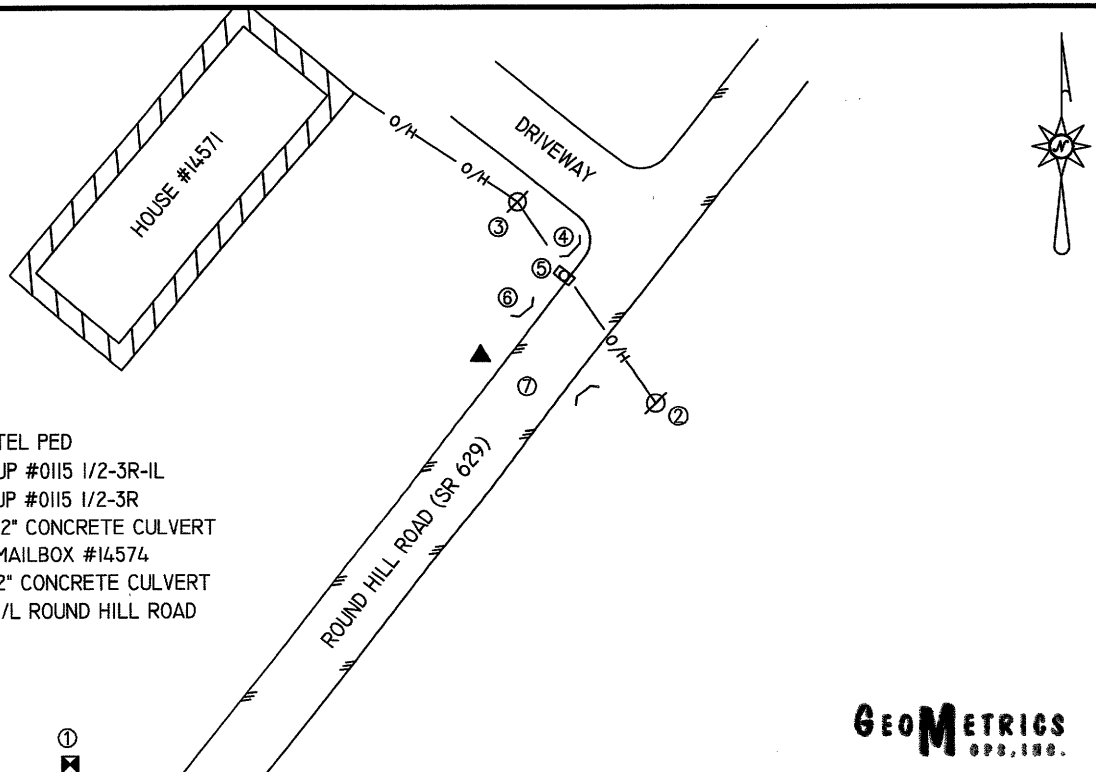
COUNTY	NAME OF STATION	YEAR
KING GEORGE	ROUND	2005
N: 6775749.23	LAT: 38° 14' 45.60663"	COMBINED FACTOR: 0.99996928
E: 11887792.01	LONG: 77° 05' 24.57702"	θ ANGLE: 0° 52' 47.7"
ELEVATION: 91.86 (ESTABLISHED BY GPS)		
DISTANCES AND DIRECTIONS TO AZIMUTH MARKS		
STATION	GROUND DISTANCE	TRUE AZIMUTH
N/A	N/A	N/A

THE STATION IS LOCATED IN KING GEORGE COUNTY, VIRGINIA, APPROXIMATELY 10.5 KM (6.5 MILES) WEST OF COLONIAL BEACH, AND 9.2 KM (5.7 MILES) EAST OF KING GEORGE.

TO REACH THE STATION FROM THE INTERSECTION OF US HIGHWAY 301 (JAMES MADISON PARKWAY) AND SR 3 (KINGS HIGHWAY), GO EAST ON SR 3 FOR 2.7 KM (1.7 MILES) TO ITS INTERSECTION WITH SR 629 (ROUND HILL ROAD). TURN LEFT AND GO NORTHEAST ON SR 629 FOR 3.0 KM (1.9 MILES) TO ITS INTERSECTION WITH SR 666 (GULVEY LOOP). CONTINUE NORTHEAST ON SR 629 FOR 0.2 KM (0.1 MILE) TO THE STATION ON THE LEFT IN FRONT OF HOUSE NUMBER 14571.

THE STATION IS A 3.5 INCH KING GEORGE COUNTY, VA ALUMINUM SURVEY DISK SET INTO A POURED IN PLACE CONCRETE MONUMENT 10 INCHES IN DIAMETER, FLUSH WITH THE GROUND SURFACE AND STAMPED ROUND 2005

SKETCH:



1. 151.0' TO TEL PED
2. 47.6' TO UP #0115 1/2-3R-IL
3. 40.0' TO UP #0115 1/2-3R
4. 36.2' TO 12" CONCRETE CULVERT
5. 29.7' TO MAILBOX #14574
6. 16.7' TO 12" CONCRETE CULVERT
7. 15.0' TO C/L ROUND HILL ROAD

GEOMETRICS
GPS, INC.

DRAWN BY: BCL

CHECKED BY: DAR

DATE: 03/2005

APPROX. SCALE: 1" = 50'