

KING GEORGE COUNTY VIRGINIA 2010 GEODETIC CONTROL SURVEY

JN 110-020

HORIZONTAL DATUM: NAD 83(2007)
 VERTICAL DATUM: NAVD 88
 COORDINATE SYSTEM: VIRGINIA STATE PLANE, NORTH ZONE
 UNITS: U.S. SURVEY FOOT

HORIZONTAL ORDER: FIRST
 VERTICAL ORDER: THIRD

COUNTY	NAME OF STATION	YEAR
KING GEORGE	SIERRA	2010
N: 6797777.95	LAT: 38° 18' 31.18882"	COMBINED FACTOR: 0.99996283
E: 11832398.47	LONG: 77° 16' 55.22610"	⊖ ANGLE: 0° 45' 37"
ELEVATION: 153.88 (ESTABLISHED BY GPS)		

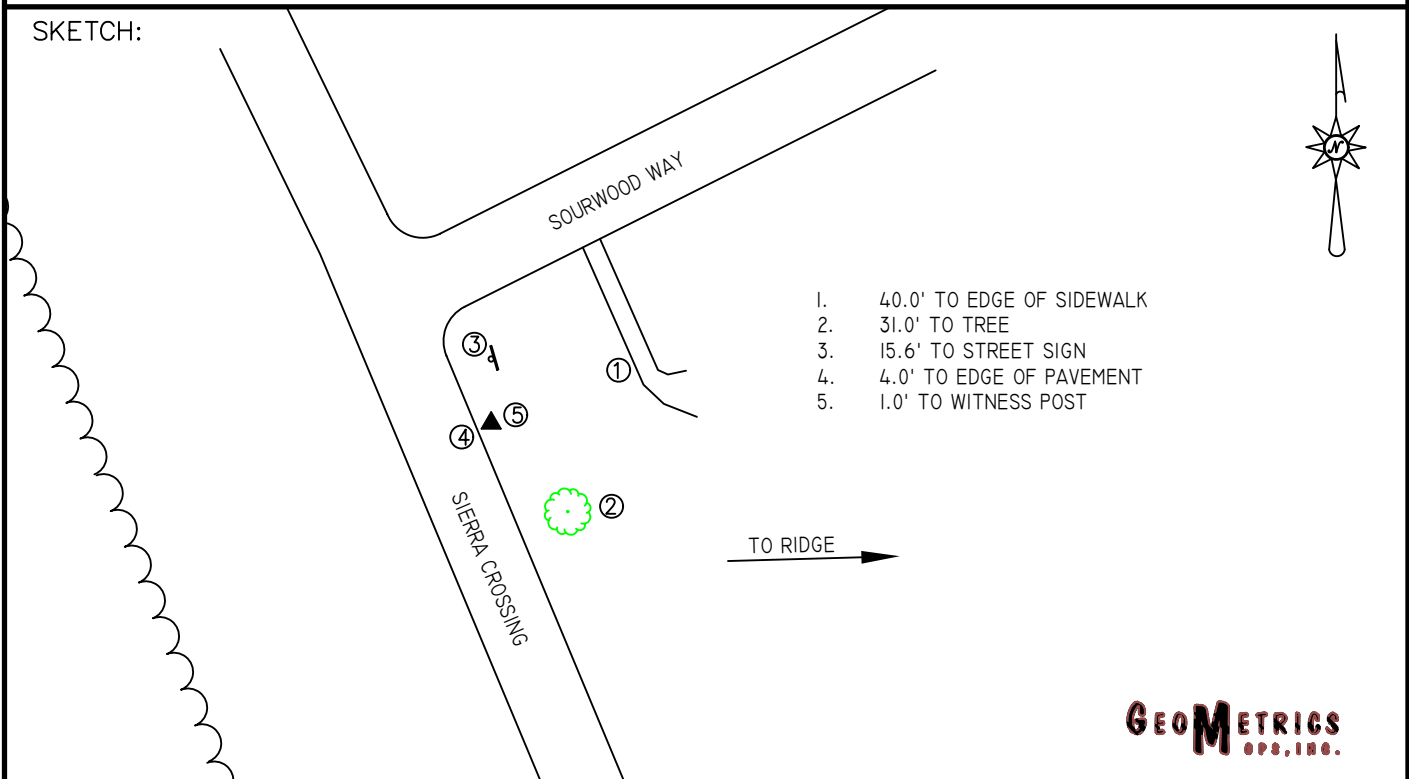
DISTANCES AND DIRECTIONS TO AZIMUTH MARKS		
STATION	GROUND DISTANCE	TRUE AZIMUTH
RIDGE	569.40	79°36'09"

THE STATION IS LOCATED IN KING GEORGE COUNTY, VIRGINIA, ABOUT 15.5 KM (9.6 MILES) EAST OF FREDERICKSBURG, ABOUT 9.6 KM (6.0 MILES) NORTHWEST OF KING GEORGE, AND ABOUT 3.7 KM (2.3 MILES) SOUTHWEST OF FAIRVIEW BEACH.

TO REACH THE STATION FROM THE INTERSECTION OF U.S. HIGHWAY 3 (KINGS HIGHWAY) AND DAHLGREN ROAD (SR 206), ABOUT 2 KM (1.2 MILES) NORTHWEST OF KING GEORGE, GO NORTHWESTERLY ON U.S. HIGHWAY 3 FOR 1.6 KM (1.0 MILES) TO AN INTERSECTION. TURN RIGHT AND GO NORTHERLY ON COMORN ROAD (SR 609) FOR 4.1 KM (2.5 MILES) TO AN INTERSECTION. TURN LEFT AND GO NORTHWESTERLY ON CALEDON ROAD (SR 218) FOR 5.4 KM (3.4 MILES) TO AN INTERSECTION. TURN RIGHT AND GO NORTH ON SIERRA CROSSING FOR 70.0 METERS (230 FEET) TO ITS INTERSECTION WITH SOURWOOD WAY AND THE STATION ON THE RIGHT.

THE STATION IS A 3.5 INCH KING GEORGE COUNTY, VA ALUMINUM SURVEY DISK SET INTO A Poured IN PLACE CONCRETE MONUMENT 10 INCHES IN DIAMETER, FLUSH WITH THE GROUND SURFACE AND STAMPED SIERRA 2010.

SKETCH:



GEOMETRICS
OPS, INC.

DRAWN BY: CEN	CHECKED BY: DAR	DATE: 05/2010	APPROX. SCALE: 1" = 50'
---------------	-----------------	---------------	-------------------------