

# KING GEORGE COUNTY VIRGINIA 2005 GEODETIC CONTROL SURVEY (REVISED 11-08)

JN 105-001

HORIZONTAL DATUM: NAD 83(2007)  
 VERTICAL DATUM: NAVD 88  
 COORDINATE SYSTEM: VIRGINIA STATE PLANE, NORTH ZONE  
 UNITS: U.S. SURVEY FOOT

HORIZONTAL ORDER: FIRST  
 VERTICAL ORDER: THIRD

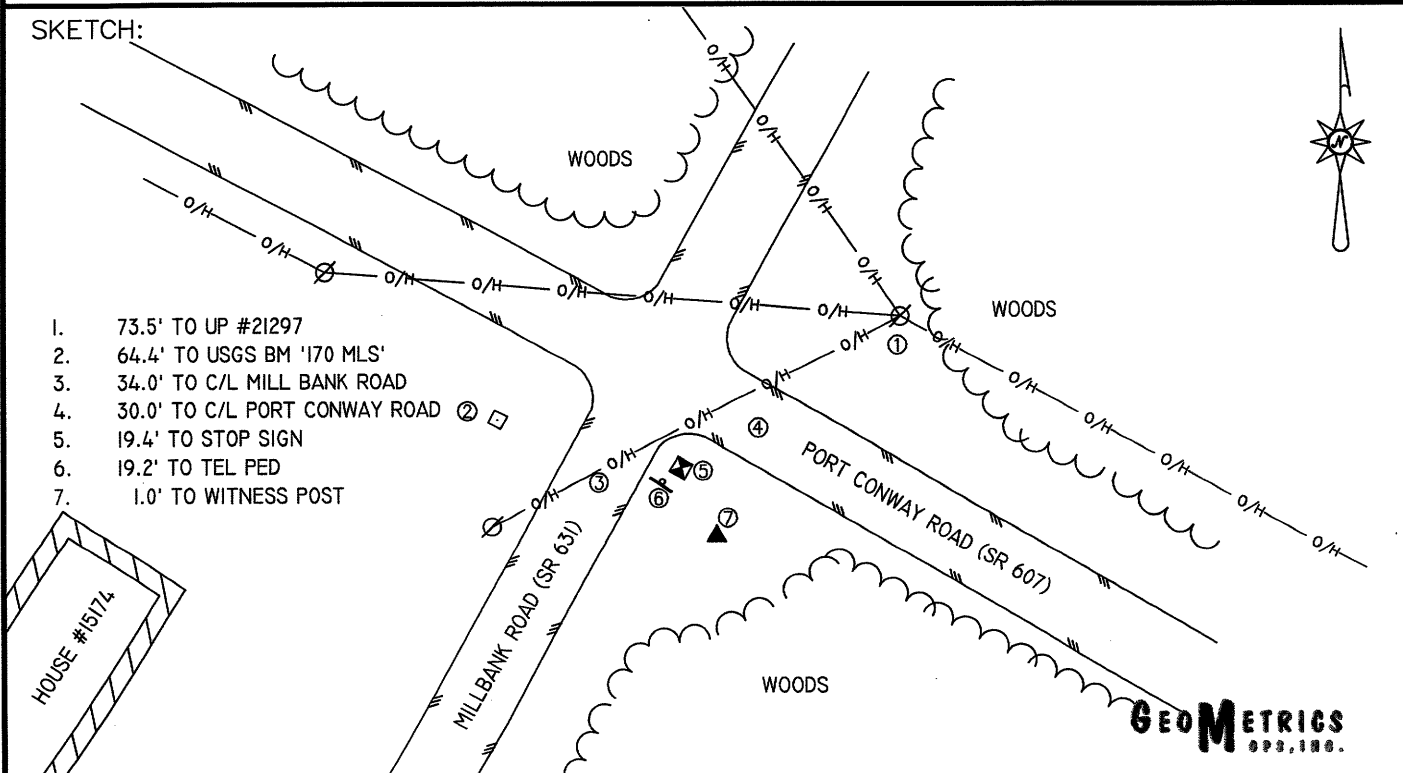
COUNTY	NAME OF STATION	YEAR
KING GEORGE	MILLS	2005
N: 6760330.50	LAT: 38° 12' 17.26366"	COMBINED FACTOR: 0.99997417
E: 11860062.78	LONG: 77° 11' 14.89829"	θ ANGLE: 0° 49' 09.0"
ELEVATION: 90.38 (ESTABLISHED BY GPS)		
DISTANCES AND DIRECTIONS TO AZIMUTH MARKS		
STATION	GROUND DISTANCE	TRUE AZIMUTH
N/A	N/A	N/A

THE STATION IS LOCATED IN KING GEORGE COUNTY, VIRGINIA, APPROXIMATELY 22.5 KM (14.0 MILES) NORTHEAST OF BOWLING GREEN, AND 8.0 KM (5.0 MILES) SOUTH OF KING GEORGE.

TO REACH THE STATION FROM THE INTERSECTION OF US HIGHWAY 301 (JAMES MADISON PARKWAY) AND SR 3 (KINGS HIGHWAY), GO SOUTH ON US HIGHWAY 301 FOR 6.1 KM (3.8 MILES) TO ITS INTERSECTION WITH SR 607 (PORT CONWAY ROAD). TURN RIGHT AND GO NORTHWEST ON SR 607 FOR 1.4 KM (0.9 MILE) TO ITS INTERSECTION WITH SR 631 (MILL BANK ROAD) AND THE STATION ON THE LEFT.

THE STATION IS A 3.5 INCH KING GEORGE COUNTY, VA ALUMINUM SURVEY DISK SET INTO A POURED IN PLACE CONCRETE MONUMENT 10 INCHES IN DIAMETER, FLUSH WITH THE GROUND SURFACE AND STAMPED MILLS 2005.

SKETCH:



1. 73.5' TO UP #21297
2. 64.4' TO USGS BM '170 MLS'
3. 34.0' TO C/L MILL BANK ROAD
4. 30.0' TO C/L PORT CONWAY ROAD ②
5. 19.4' TO STOP SIGN
6. 19.2' TO TEL PED
7. 1.0' TO WITNESS POST

**GEOMETRICS**  
GPS, INC.

DRAWN BY: BCL

CHECKED BY: DAR

DATE: 03/2005

APPROX. SCALE: 1" = 50'