

**KING GEORGE COUNTY
2007 CONTROL SURVEY**

JN 107-043

HORIZONTAL DATUM: NAD 83/93
 VERTICAL DATUM: NAVD 88
 COORDINATE SYSTEM: VIRGINIA STATE PLANE, NORTH ZONE
 UNITS: U.S. SURVEY FOOT

HORIZONTAL ORDER: FIRST
 VERTICAL ORDER: THIRD

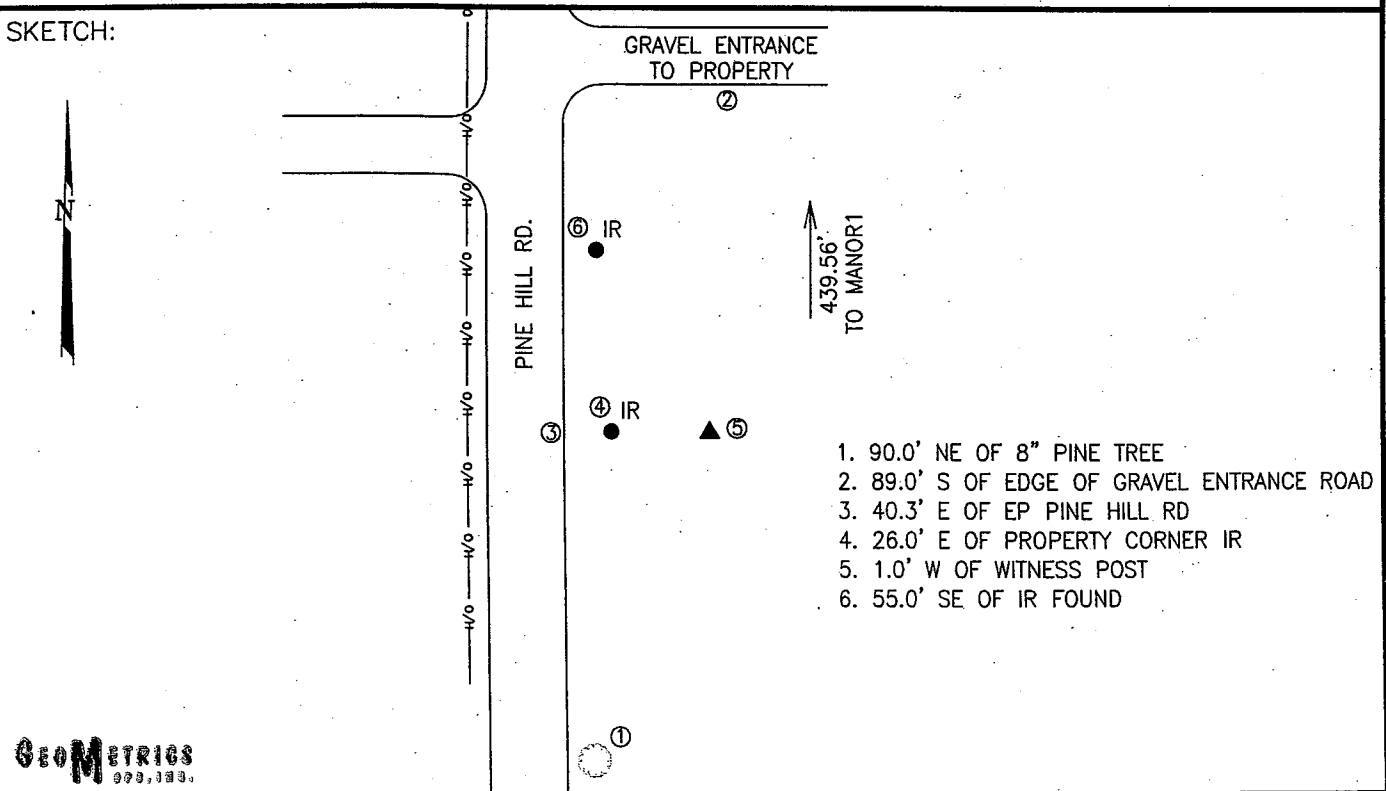
COUNTY	NAME OF STATION	YEAR
KING GEORGE	MANOR2	2007
N: 6775755.02	LAT: 38° 14' 45.90545" N	COMBINED FACTOR: 0.99996778
E: 11886196.91	LONG: 77° 05' 44.56860" W	⊕ ANGLE: 0° 52' 35"
ELEVATION: 140.41' (ESTABLISHED BY GPS)		
DISTANCES AND DIRECTIONS TO AZIMUTH MARKS		
STATION	GROUND DISTANCE	TRUE AZIMUTH
MANOR1	439.56'	344° 08' 54"

THE STATION IS LOCATED ABOUT 8.0 KM (5.0 MILES) SOUTHEAST OF KING GEORGE, AND 12.1 KM (7.5 MILES) NORTHEAST OF PORT ROYAL.

TO REACH THE STATION FROM THE INTERSECTION OF SR 3 (KINGS HIGHWAY) AND US HIGHWAY 301 (JAMES MADISON PKWY), GO EAST ON SR 3 FOR 2.7 KM (1.7 MILE) TO ITS INTERSECTION WITH SR 629 (ROUND HILL RD). TURN LEFT AND GO NORTHEAST ON SR 629 FOR 2.7 KM (1.7 MILES) TO ITS INTERSECTION WITH PINE HILL RD. TURN LEFT AND CONTINUE NORTH EAST ON PINE HILL RD FOR 0.38 KM (0.24 MILE) TO THE STATION ON THE RIGHT.

THE STATION IS A KING GEORGE COUNTY DISC SET IN CONCRETE, STAMPED "MANOR2 2007", AND SET FLUSH WITH THE GROUND.

SKETCH:



DRAWN BY: CEN

CHECKED BY: DAR

DATE: 07/2007

APPROX. SCALE: 1" = 50'

