

**KING GEORGE COUNTY VIRGINIA
2005 GEODETIC CONTROL SURVEY (REVISED 11-08)**

JN 105-001

HORIZONTAL DATUM: NAD 83(2007)
 VERTICAL DATUM: NAVD 88
 COORDINATE SYSTEM: VIRGINIA STATE PLANE, NORTH ZONE
 UNITS: U.S. SURVEY FOOT

HORIZONTAL ORDER: FIRST
 VERTICAL ORDER: THIRD

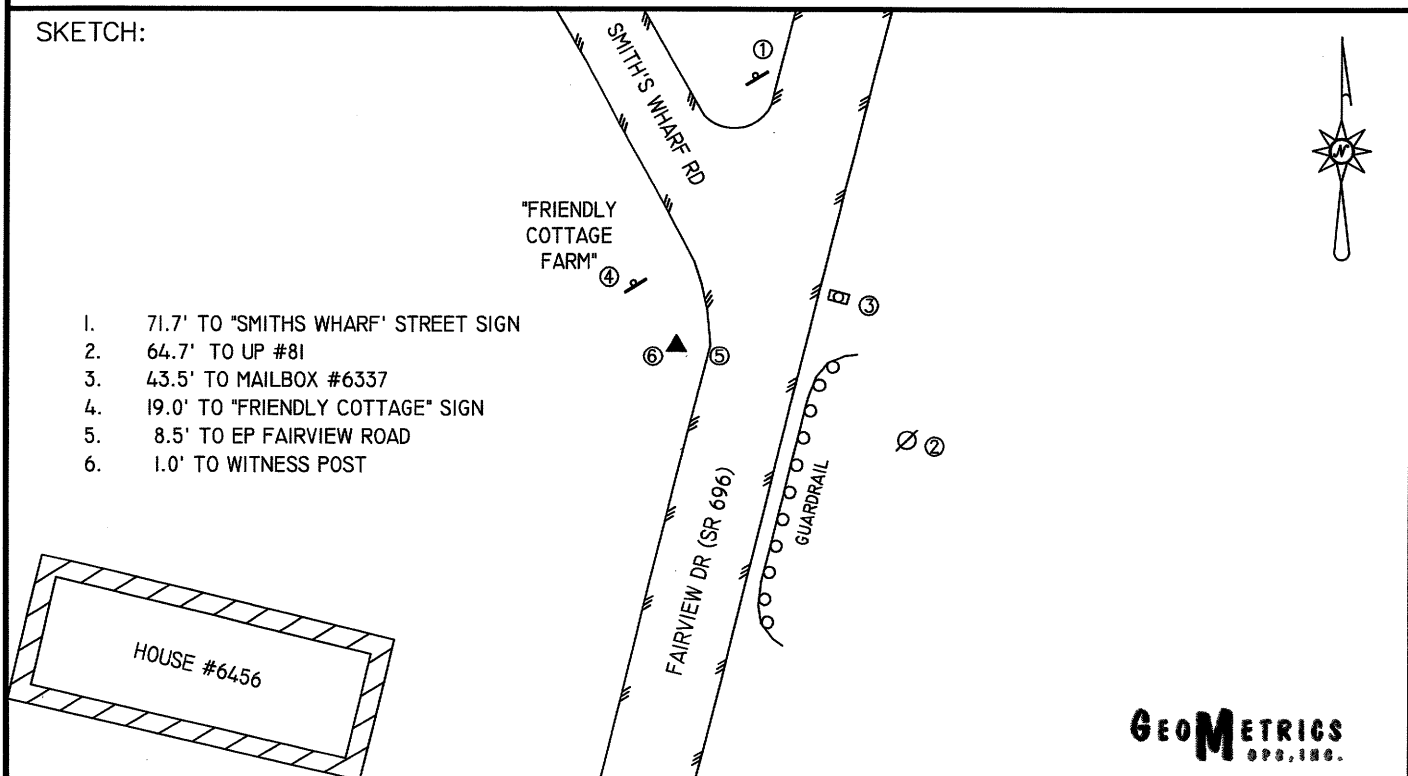
COUNTY	NAME OF STATION	YEAR
KING GEORGE	FAIRVIEW	2005
N: 6803395.06	LAT: 38° 19' 25.37797"	COMBINED FACTOR: 0.99996146
E: 11842427.14	LONG: 77° 14' 48.45488"	θ ANGLE: 0° 46' 55.7"
ELEVATION: 146.06 (ESTABLISHED BY GPS)		
DISTANCES AND DIRECTIONS TO AZIMUTH MARKS		
STATION	GROUND DISTANCE	TRUE AZIMUTH
N/A	N/A	N/A

THE STATION IS LOCATED IN KING GEORGE COUNTY, VIRGINIA, APPROXIMATELY 17.7 KM (11.0 MILES) SOUTHEAST OF STAFFORD, AND 8.0 KM (5.0 MILES) NORTH OF KING GEORGE, AT FAIRVIEW BEACH.

TO REACH THE STATION FROM THE INTERSECTION OF SR 3 (KINGS HIGHWAY) AND SR 206 (DAHLGREN ROAD), GO WEST ON SR 3 FOR 1.6 KM (1.0 MILE) TO ITS INTERSECTION WITH SR 677 (COMORN ROAD). TURN RIGHT AND GO NORTHWEST ON SR 677 FOR 0.3 KM (0.2 MILE) TO ITS INTERSECTION WITH SR 609 (COMORN ROAD). TURN RIGHT AND GO NORTH ON SR 609 FOR 3.9 KM (2.4 MILES) TO ITS INTERSECTION WITH SR 218 (CALEDON ROAD). TURN LEFT AND GO NORTHWEST FRO 1.8 KM (1.1 MILE) TO ITS INTERSECTION WITH SR 696 (FAIRVIEW DRIVE). TURN RIGHT AND GO NORTH ON SR 696 FOR 0.6 KM (0.4 MILE) TO ITS INTERSECTION WITH SMITH'S WHARF ROAD AND THE STATION ON THE LEFT AT THE INTERSECTION.

THE STATION IS A 3.5 INCH KING GEORGE COUNTY, VA ALUMINUM SURVEY DISK SET INTO A Poured IN PLACE CONCRETE MONUMENT 10 INCHES IN DIAMETER, FLUSH WITH THE GROUND SURFACE AND STAMPED FAIRVIEW 2005.

SKETCH:



DRAWN BY: BCL

CHECKED BY: DAR

DATE: 03/2005

APPROX. SCALE: 1" = 50'

GEOMETRICS
SPE, INC.