

KING GEORGE COUNTY VIRGINIA 2005 GEODETIC CONTROL SURVEY

JN 105-001

HORIZONTAL DATUM: NAD 83/93
 VERTICAL DATUM: NAVD 88
 COORDINATE SYSTEM: VIRGINIA STATE PLANE, NORTH ZONE
 UNITS: U.S. SURVEY FOOT

HORIZONTAL ORDER: A
 VERTICAL ORDER: FIRST

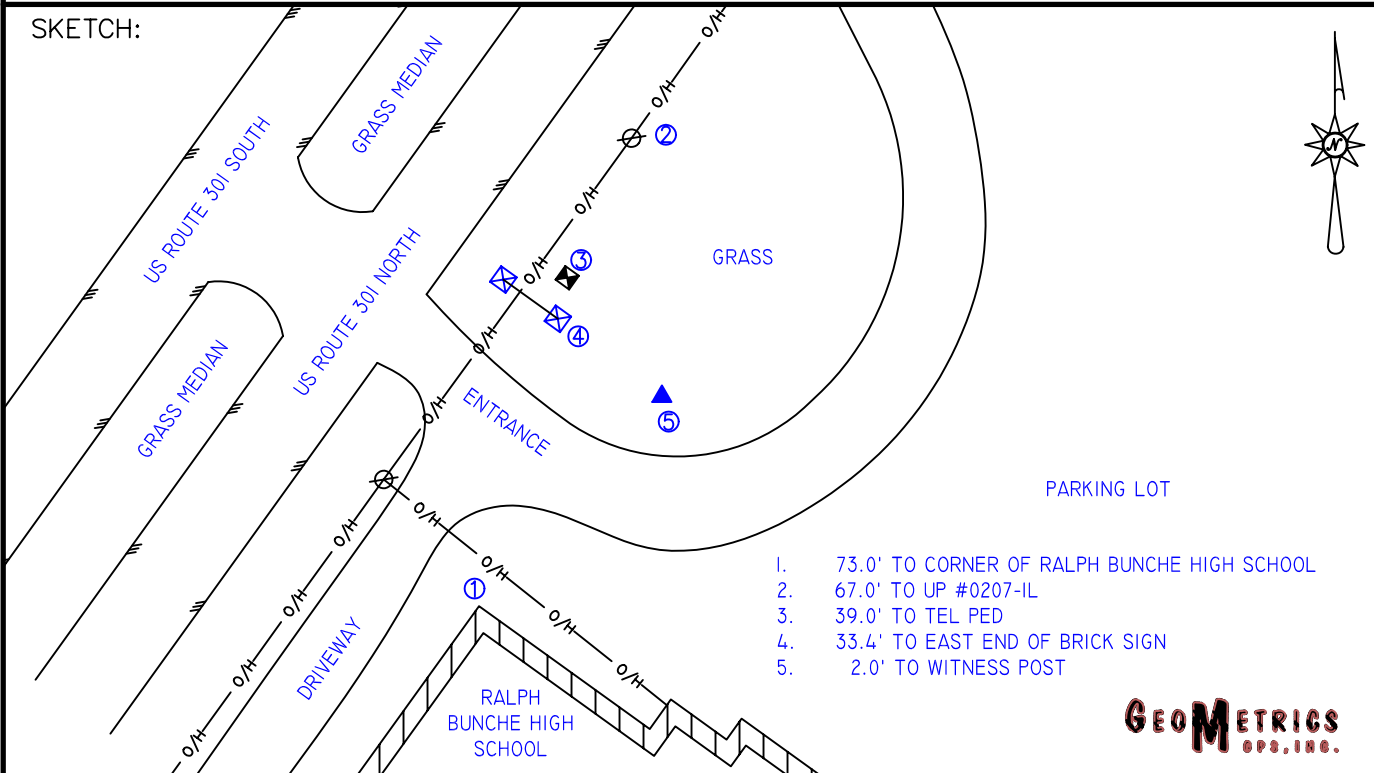
COUNTY	NAME OF STATION	YEAR
KING GEORGE	D 462	1971
N: 6784971.01	LAT: 38° 16' 18.79742"	COMBINED FACTOR: 0.99996647
E: 11874138.15	LONG: 77° 08' 13.99710"	θ ANGLE: 0° 51' 01.9"
ELEVATION: 183.78 (ESTABLISHED BY DIFFERENTIAL LEVELING- NGS)		
DISTANCES AND DIRECTIONS TO AZIMUTH MARKS		
STATION	GROUND DISTANCE	TRUE AZIMUTH
N/A	N/A	N/A

THE STATION IS LOCATED IN KING GEORGE COUNTY, VIRGINIA, APPROXIMATELY 4.8 KM (3 MILES) EAST OF KING GEORGE AND 10.5 KM (6.5 MILES) SOUTHWEST OF DAHLGREN.

TO REACH THE STATION FROM THE COURTHOUSE IN KING GEORGE, GO EAST ALONG SR 3 (KINGS HIGHWAY) FOR 4.0 KM (2.5 MILES), TO ITS INTERSECTION WITH U.S. HIGHWAY 301 (JAMES MADISON PARKWAY). TURN LEFT AND GO NORTHEAST ON US HIGHWAY 301 FOR 4.0 KM (2.5 MILES) TO THE STATION ON THE RIGHT.

THE STATION IS A STANDARD BRONZE COAST AND GEODETIC SURVEY BENCHMARK DISK SET IN THE TOP OF A CONCRETE POST FLUSH WITH THE GROUND AND STAMPED "D 462 1971".

SKETCH:



1. 73.0' TO CORNER OF RALPH BUNCHE HIGH SCHOOL
2. 67.0' TO UP #0207-IL
3. 39.0' TO TEL PED
4. 33.4' TO EAST END OF BRICK SIGN
5. 2.0' TO WITNESS POST

GEOMETRICS
GPS, INC.

DRAWN BY: BCL

CHECKED BY: DAR

DATE: 03/2005

APPROX. SCALE: 1" = 50'