

KING GEORGE COUNTY VIRGINIA 2008 GEODETIC CONTROL SURVEY

JN 107-112

HORIZONTAL DATUM: NAD 83(2007)
VERTICAL DATUM: NAVD 88
COORDINATE SYSTEM: VIRGINIA STATE PLANE, NORTH ZONE
UNITS: U.S. SURVEY FOOT

HORIZONTAL ORDER: FIRST
VERTICAL ORDER: THIRD

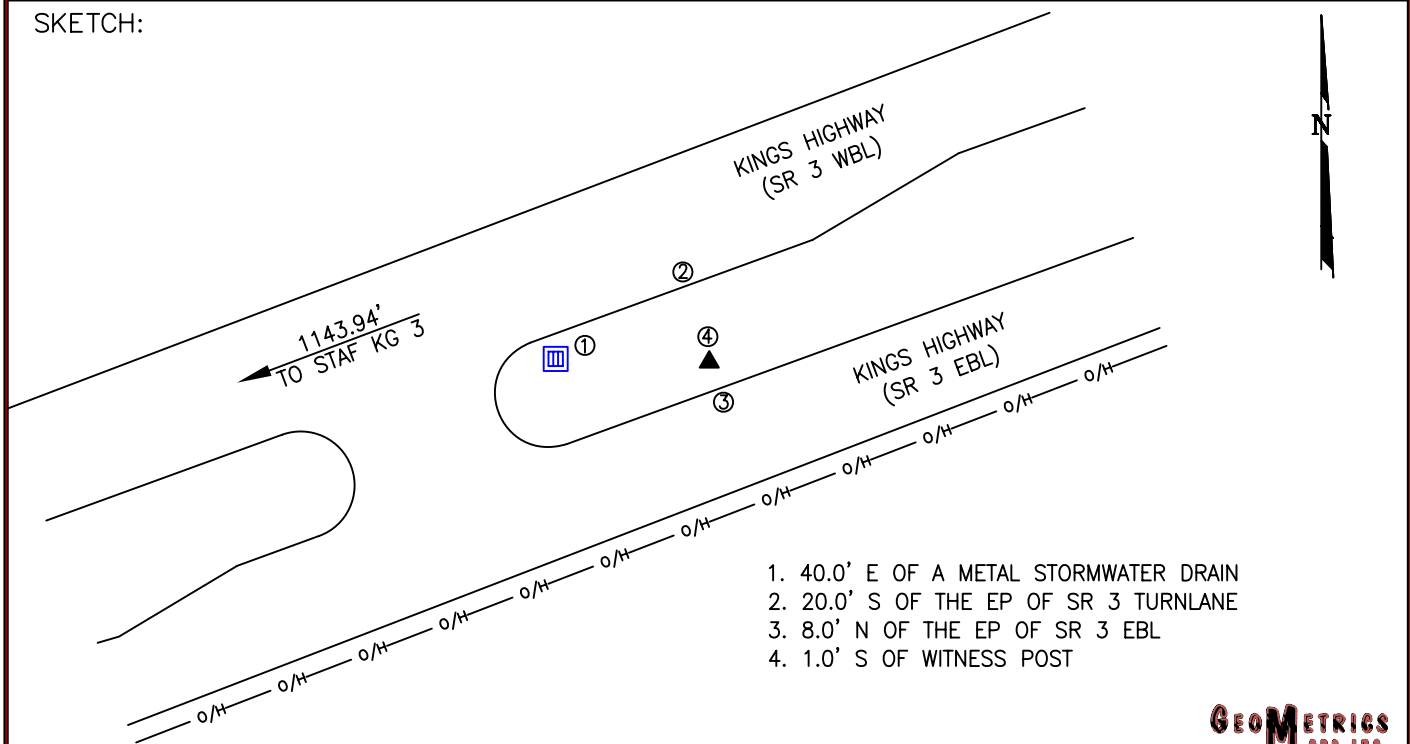
COUNTY	NAME OF STATION	YEAR
KING GEORGE	STAFKG 3 AZ	2008
N: 6780475.04	LAT: 38° 15' 42.18975" N	COMBINED FACTOR: 0.99997094
E: 11816506.58	LONG: 77° 20' 17.33923" W	⊖ ANGLE: 0° 43' 30"
ELEVATION: 52.56' (ESTABLISHED BY GPS)		
DISTANCES AND DIRECTIONS TO AZIMUTH MARKS		
STATION	GROUND DISTANCE	TRUE AZIMUTH
STAFKG 3	1143.94'	246° 05' 32"

THE STATION IS LOCATED APPROXIMATELY 13.4 KM (8.3 MILES) WEST OF KING GEORGE AND 11.6 KM (7.2 MILES) SOUTHEAST OF FREDERICKSBURG.

TO REACH THE STATION FROM THE INTERSECTION OF SR 3 (KINGS HIGHWAY) AND SR 607 (PORT CONWAY ROAD), GO WEST ON SR 3 FOR 6.9 KM (4.3 MILES) TO ITS INTERSECTION WITH SR 665 (BIRCHWOOD CREEK ROAD). CONTINUE WEST ON SR 3 FOR 1.8 KM (1.1 MILES) TO THE STATION IN THE MEDIAN.

THE STATION IS 12.2 METERS (40.0 FEET) EAST FROM A METAL STORM WATER DRAIN, 6.1 METERS (20.0 FEET) SOUTH FROM THE EDGE OF PAVEMENT OF THE WEST BOUND TURN LANE OF SR 3, 2.4 METERS (8.0 FEET) NORTH FROM THE EDGE OF PAVEMENT OF THE EASTBOUND LANES OF SR 3, AND 0.3 METERS (1.0 FOOT) SOUTH FROM A WITNESS POST. THE STATION IS A STANDARD KING GEORGE COUNTY, VA ALUMINUM SURVEY DISK SET INTO A POURED IN PLACE CONCRETE MONUMENT 10 INCHES IN DIAMETER, FLUSH WITH THE GROUND SURFACE AND STAMPED STAF-KG3 AZ 2008.

SKETCH:



1. 40.0' E OF A METAL STORMWATER DRAIN
2. 20.0' S OF THE EP OF SR 3 TURNLANE
3. 8.0' N OF THE EP OF SR 3 EBL
4. 1.0' S OF WITNESS POST

