

# KING GEORGE COUNTY VIRGINIA 2008-2009 GEODETIC CONTROL SURVEY

JN 108-106

HORIZONTAL DATUM: NAD 83(2007)  
 VERTICAL DATUM: NAVD 88  
 COORDINATE SYSTEM: VIRGINIA STATE PLANE, NORTH ZONE  
 UNITS: U.S. SURVEY FOOT

HORIZONTAL ORDER: FIRST  
 VERTICAL ORDER: THIRD

COUNTY	NAME OF STATION	YEAR
KING GEORGE	AMBAR	2008
N: 6803685.31	LAT: 38° 19' 25.29187" N	COMBINED FACTOR: 0.99995984
E: 11863696.02	LONG: 77° 10' 21.53233" W	⊖ ANGLE: 0° 49' 42"
ELEVATION: 170.92' (ESTABLISHED BY GPS)		
DISTANCES AND DIRECTIONS TO AZIMUTH MARKS		
STATION	GROUND DISTANCE	TRUE AZIMUTH
AMBAR AZ	1233.23	189° 14' 20"

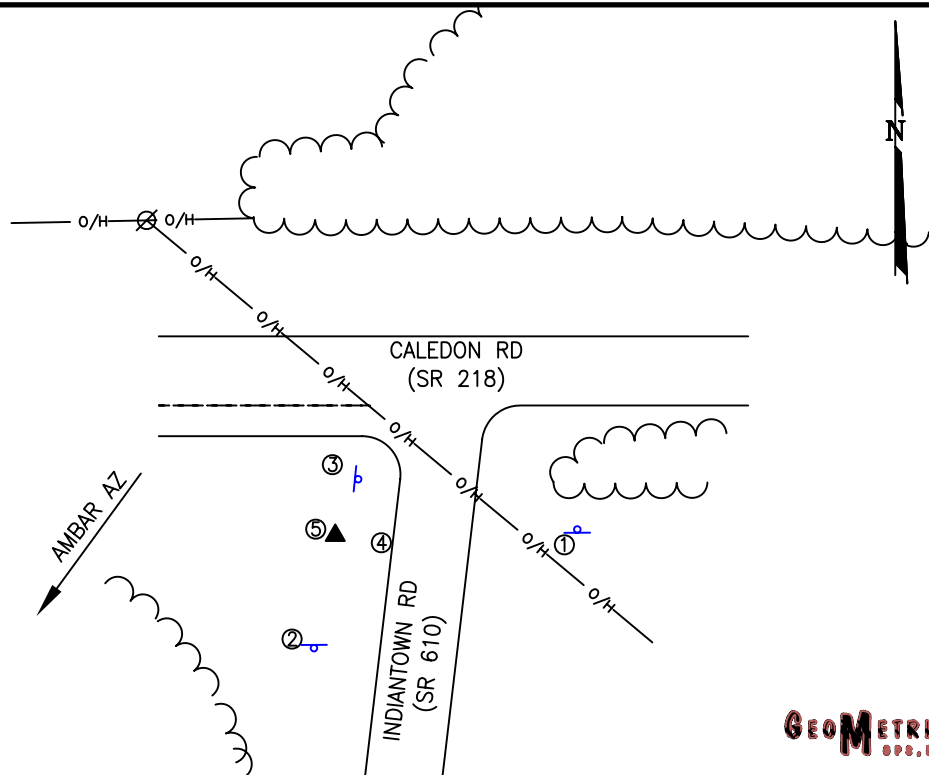
THE STATION IS LOCATED IN KING GEORGE COUNTY, VIRGINIA, APPROXIMATELY 6.3 KM (3.9 MILES) NORTH OF KING GEORGE.

TO REACH THE STATION FROM THE INTERSECTION OF US HIGHWAY 301(JAMES MADISON PARKWAY) AND SR 206 (DAHLGREN ROAD), GO WEST ON SR 206 FOR 4.2 KM (2.6 MILES) TO ITS INTERSECTION WITH SR 218 (CALEDON RD). TURN RIGHT AND GO WEST ON SR 218 FOR 4.7 KM (2.9 MILES) TO ITS INTERSECTION WITH SR 610 (INDIANTOWN ROAD) AND THE STATION ON THE RIGHT IN THE SOUTHWEST CORNER OF THE INTERSECTION.

THE STATION IS A STANDARD KING GEORGE COUNTY, VA ALUMINUM SURVEY DISK SET INTO A Poured IN PLACE CONCRETE MONUMENT 10 INCHES IN DIAMETER, FLUSH WITH THE GROUND SURFACE AND STAMPED AMBAR.

**SKETCH:**

1. 63' W OF A ROAD SIGN
2. 30.7' N OF A SPEED LIMIT SIGN
3. 15.0' S OF A ROAD SIGN
4. 15.0' W OF THE CL OF SR 610
5. 1.0' E OF WITNESS POST



**GEOMETRICS**  
SPE. INC.

DRAWN BY: KLS

CHECKED BY: KRO

DATE: 01/2009

APPROX. SCALE: 1" = 50'