

**KING GEORGE – WESTMORELAND COUNTY, VA
COUNTY BOUNDARY CONTROL SURVEY**

JN 101-045 & 108-106

MAP PROJECTION: LAMBERT (REVISED 11-08)
NAD 83(2007) * VIRGINIA STATE PLANE COORDINATE SYSTEM * NORTH ZONE * U.S. SURVEY FOOT

HORIZONTAL ORDER: FIRST

COUNTY	NAME OF STATION	YEAR
KING GEORGE	3	2001

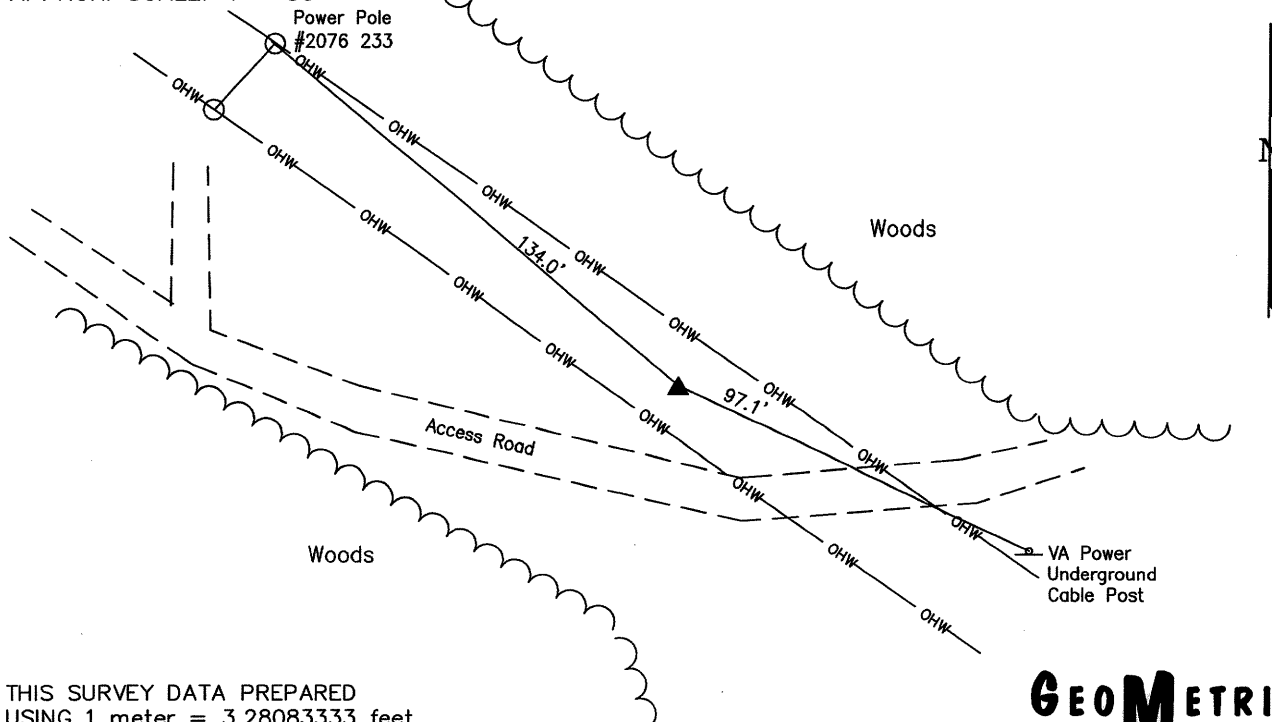
N: 6759534.11	E: 11899570.13	LAT: 38°12'03.51570"N	LONG: 77°03'00.16376"W
COMBINED FACTOR: 0.99997746		Θ ANGLE: 0°54'18"	

ESTABLISHED BY: GeoMetrics GPS, INC.	DISTANCES AND DIRECTIONS TO REFERENCE MARKS AND PROMINENT OBJECTS OBSERVED AT STATION		
	OBJECT	GROUND DISTANCE	TRUE AZIMUTH
VERTICAL DATUM NAVD 88	4	1345.30	113°51'45"
ELEVATION (ft) 50.39			
VERTICAL ORDER: THIRD			

STATION DESCRIPTION: A King George/Westmoreland County survey disk set in concrete flush with the ground, stamped 3 2001. The station is located east of Route 627 at the power line. To reach the station from the intersection of Route 3 and Route 327, proceed north along Route 627 approximately 1.35 miles to its intersection with a power line road. Turn right and proceed southeast along the power line road approximately 0.23 mile to the station on the left near a carsonite witness post.

SKETCH OF STATION:

APPROX. SCALE: 1" = 50'



THIS SURVEY DATA PREPARED
USING 1 meter = 3.28083333 feet

PREPARED BY: BCL	5/01
CHECKED BY: LLR	5/01

NOTE:
IN 2008 THE COORDINATES WERE CONVERTED TO
NAD83(2007) BY APPLYING A COMPUTED SHIFT

GEOMETRICS
GPS, INC.

236 CAMBRIDGE STREET
FREDERICKSBURG, VIRGINIA
(540) 372-3499